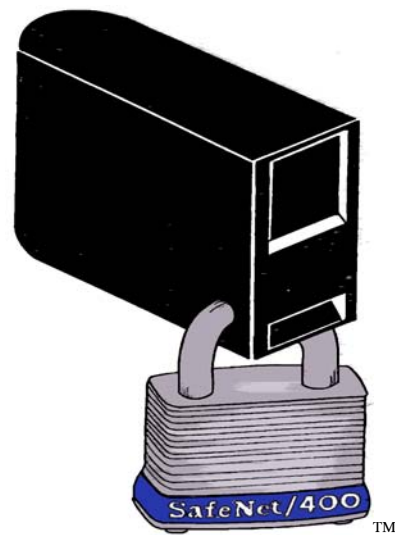


SAFENET/400

FOR THE IBM SYSTEM i5

INSTALLATION AND UPGRADE GUIDE

Version 8.0



How to contact us

Direct all inquiries to:

Kisco Information Systems
89 Church Street
Saranac Lake, New York 12983

Phone: (518) 897-5002
Fax: (518) 897-5003

SafeNet/400 Website: <http://www.kisco.com/safenet>

SafeNet/400 Support Website: <http://www.kisco.com/safenet/support>

Visit the SafeNet/400 Web Site at [HTTP://WWW.KISCO.COM/SAFENET](http://www.kisco.com/safenet)

TABLE OF CONTENTS

CHAPTER 1 - INSTALLING SAFENET/400 – NEW INSTALLATION ONLY	1.1
CHAPTER 2 - UPGRADING TO A NEW RELEASE OF SAFENET/400.....	2.1
CHAPTER 3 - INSTALLING PTFS	3.1

SafeNet/400 Installation and Upgrade Guide

Chapter 1 - INSTALLING SAFENET/400 – NEW INSTALLATION ONLY

Important: If you currently have SafeNet/400 Version 7 installed – **STOP** and proceed to the Release 8 Migration Instructions Guide.

What SafeNet/400 will change on your system

The following will occur automatically during the **SafeNet/400** installation process when using the LODRUN command. No verification or pre-processing screens are displayed during the installation.

1. Library PCSECLIB, which contains the **SafeNet/400** licensed programs, and library PCSECDTA, which contains data, are created.
2. The network attribute DDMACC is changed from *OBJAUT to SAFENET/PCSECLIB. This controls the *DDM Server* function exit point.
3. The network attribute PCSACC is changed from *OBJAUT to *REGFAC. This controls the *Original PC Support* client transfer requests.
4. Exit point program SAFENET in PCSECLIB is registered to all supported OS/400 servers. Use the System i5 WRKREGINF command if you require further information.
5. Two user profiles are assigned super-administrator rights to SafeNet/400 by default: profiles SAFENET and QSECOFR. You may choose to alter these, but we recommend leaving QSECOFR as a default Super Admin. See ‘SafeNet Administrator’ in Chapter 2 of the SafeNet/400 Implementation Guide for more information.

Help

All screens, menus and commands within **SafeNet/400** provide extensive **HELP** panels. This **HELP** is available by using the **F1** key or **HELP** key, whichever is applicable to your keyboard.

SafeNet/400 Commands

To use **SafeNet/400** commands instead of the menu structure, make sure you add PCSECLIB to your library list. Use the command:

ADDLIBLE PCSECLIB

You will find a complete list of all the **SafeNet/400** commands in Chapter 11, 'Special SafeNet/400 Considerations' in the [SafeNet/400 Reference Guide](#).

First Time Installation

Follow these steps to install **SafeNet/400** on your System i5 for the very **FIRST TIME**.

Important: If you are upgrading to Version 8 from a previous version of SafeNet/400, use the instructions found in the SafeNet/400 Release 8 Migration Guide.

1. **Create user profile SAFENET** with user class of *SECOFR and special authorities *ALLOBJ ,*SECADM and *IOSYSCFG, using the following command:

```
CRTUSRPRF SAFENET USRCLS(*SECOFR) SPCAUT(*ALLOBJ  
*SECADM *IOSYSCFG)
```

The SAFENET user profile owns all **SafeNet/400** objects. This profile can be used for all maintenance within **SafeNet/400**.

You may choose to disable this profile after installation and **SafeNet/400** Administrator setup is complete.

2. Load the **SafeNet/400** tape or CD into the appropriate drive.
3. Sign on to the System i5 as QSECOFR or SAFENET
OR
With a user profile that has a user class of *SECOFR

If you do not perform the installation using the QSECOFR profile, (or a profile with *SECOFR user class or with *IOSYSCFG special authority) the command will fail.

4. Check the setting of SYSVAL QFRCCVNRST – Force conversion on restore

During the installation process, this system value should be set to 0 or 1. If yours is set to another value, make sure you change it for the duration of the installation process, then change it back to your original setting after the installation is complete.

5. On the command line type

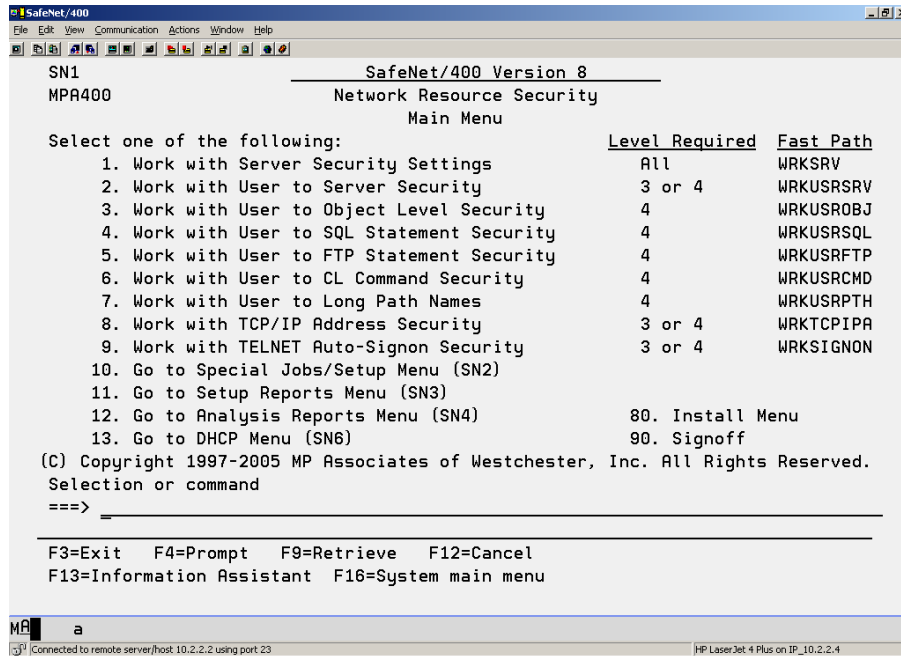
LODRUN DEV(XXX) then press **ENTER**.

Replace **XXX** with the name of your tape device.

If installing from a CD, use **DEV(OPTXX)**

As **SafeNet/400** is being installed, you will see several messages across the bottom of your screen indicating libraries are being loaded.

The installation process is complete when the SafeNet/400 Main Menu is displayed.



Important: Once you have installed **SafeNet/400** and have completed the Quickstart, at the earliest opportunity you should either perform an IPL or end your system to a restricted state, then restart the system. This will ensure that all of the **SafeNet/400** components are fully activated.

Note: As part of the installation process, additional documentation may print. Please make sure you review this documentation for the latest **SafeNet/400** updates.

Now continue with **SafeNet/400 Quickstart**; these instructions can be found in the SafeNet/400 Implementation Guide.

Chapter 2 - UPGRADING TO A NEW RELEASE OF SAFENET/400

Important

If you are planning to upgrade to SafeNet/400 Version 8, and you currently have Version 6 or below installed, you **MUST** upgrade to Version 7 before continuing. You cannot upgrade to SafeNet/400 Version 8 from a release other than Version 7.

To verify the **SafeNet/400** version and release level currently installed on your system, go to the INSTALL menu in PCSECLIB and select **Option 5**.

Upgrade Instructions

Because the SafeNet/400 upgrade instructions are updated regularly, you will find the latest version on our website, and not in this guide.

Please visit www.kisco.com/safenet/support/snrelupg.htm to see the most current upgrade instructions.

Upgrading for the First Time

If you are upgrading to **SafeNet/400 Version 8 from Version 7** for the very first time, please particular attention to the instructions contained in the Release 8 Migration Instructions.

Special Note for all customers upgrading to SafeNet/400 Release 5 or higher from any release prior to Release 5

Starting with Release 5 of **SafeNet/400**, a special user profile **must be created** on your System i5 with the name of "SAFENET" **before** you start the upgrade process. All objects are now owned by this user profile. The user profile must have *SECOFR as its profile class and it must have all object authority.

Before starting your upgrade, check your documentation for more information about this special user profile and make sure it exists on your system. (Note: the profile must have *IOSYSCFG authority.)

Chapter 3 - INSTALLING PTFs

Remote PTF Update Service

SafeNet/400 now supports distribution of program updates remotely via the Internet. Now, when programs in **SafeNet/400** are updated or program fixes are required, Kisco Information Systems can send the updates directly to you via the Internet. If needed, we will send an email to you with an attached file. This file, when loaded into a folder on your system, can be used to post program updates and changes to your copy of **SafeNet/400**.

Note: Please make sure to read the detailed text of the email that accompanies the PTF file(s) so you are aware of any special instructions that are specific to this PTF.

When you receive a PTF package from Kisco, you will be given an eight character PTF package name. To load and apply the PTF to your system, follow these steps.

If you are installing multiple **SafeNet/400** PTFs at the same time, they **MUST** be installed in strict numerical sequence.

Create a folder on your system named KISCO. You can do this with the following command:

```
CRTFLR FLR(KISCO)
```

Note: If you have received other PTFs from Kisco in the past, this folder may already exist on your system. There is no need to re-create it again at this point.

From a PC that is attached to your System i5, move the PTF package file that you received from Kisco into this folder.

From a Windows client

You can simply use a copy function to accomplish this. A command similar to the following would work:

```
copy c:\{PTF name} i:\qdl\kisco
```

where {PTF name} is the PTF package name assigned to the file.

To use Operations Navigator:

- Double click 'File Systems'
- Double click on 'File Shares'
- Double click on the 'QDLS' folder
- Double click to open the 'KISCO' folder
- Click on the PTF and drag it to the Kisco folder

After the PTF file has been copied to the KISCO folder

Sign on to any terminal or terminal session as QSECOFR.

Make sure that no **SafeNet/400** functions are in use and that no users are logged into any **SafeNet/400** menu.

Type the following command:

GO PCSECLIB/INSTALL

When the menu is displayed, **select Option 6 – Process Kisco PTF Package**. This will prompt the KISPTF command on your terminal session.

The command will prompt for two values. The first is the name of the **SafeNet/400** application library and should not be changed. The second value must contain the eight character name of the PTF package file. When both parameters are set, press ENTER and the PTFs will be loaded and applied to your copy of **SafeNet/400**.

All Kisco PTFs are loaded so that the prior version of any program object is saved. This will allow for the effects of a PTF to be reversed at a later time should a defect be identified in the PTF. This can only be done via direct instruction from a Kisco support representative.

During the PTF installation process, two printouts will be created. One of these will be the PTF cover letter documentation; the other will be a fresh update of the additional documentation topics for all **SafeNet/400** changes. Kisco recommends that you read both documents before starting to use **SafeNet/400** again.

Reducing IPLs needed at install time

The **SafeNet/400** user guide recommends an IPL prior to installing and activating the product. There is also an IPL that will be required when PTFs are applied from IBM. Since some installations run on a 24-hour basis, adding two IPLs can be a problem. To help, you can use the following procedure to combine these two IPLs into a single IPL.

- Load **SafeNet/400**, but do not change any initial settings.
- Load your OS/400 PTFs if necessary
- Do the single IPL